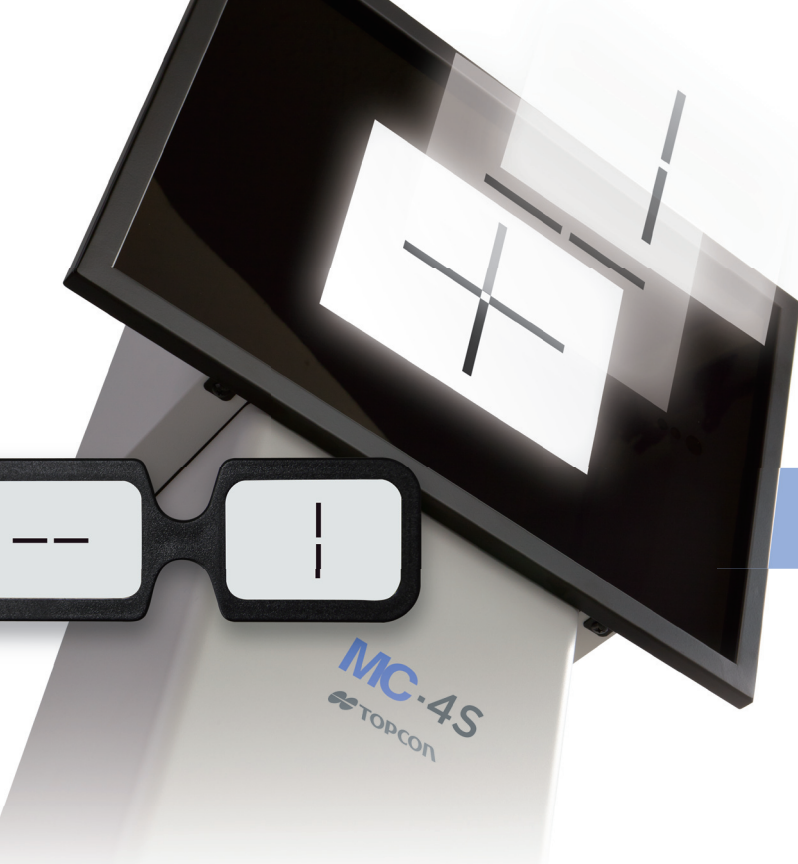


MC-4S

3D Mirror Chart



**Space-saving
Liquid Crystal Polarization
High Resolution**

» Space-saving

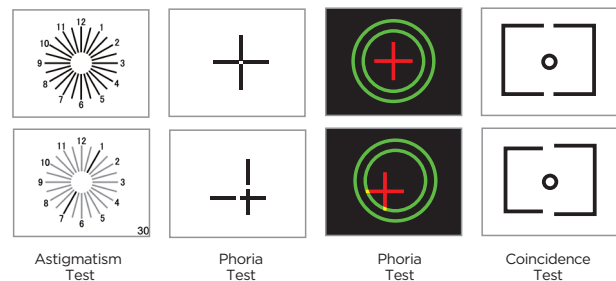
The MC-4S is a compact, short working distance acuity chart with a polarized LCD screen. The design of the MC-4S will enhance the refraction process for your patients and free up valuable space in your practice.

» Movie Playback

Both images and movie clips can be played on the LCD. Additionally you can install your own content, allowing you to customize the refraction process.

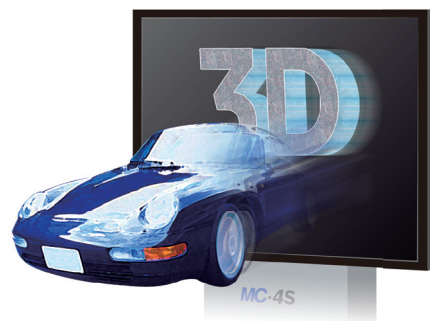
» Topcon Original Active Charts

Besides the well-known Landolt-rings and red/green charts, the MC-4S also provides original motion “active charts” that are useful for checking stereo-vision, astigmatism, heterophoria, etc.



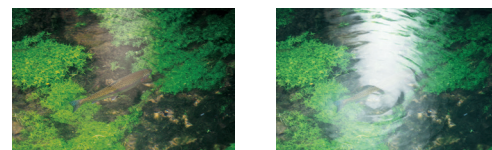
» 3D Content

In light of the ever increasing use of 3D technology in today’s world, the MC-4S incorporates 3D content. 3D movies and images can be projected on the MC-4S, which allows you to check your patient’s vision in 3D and provides them with a refraction experience they will remember.



» Polarization Image

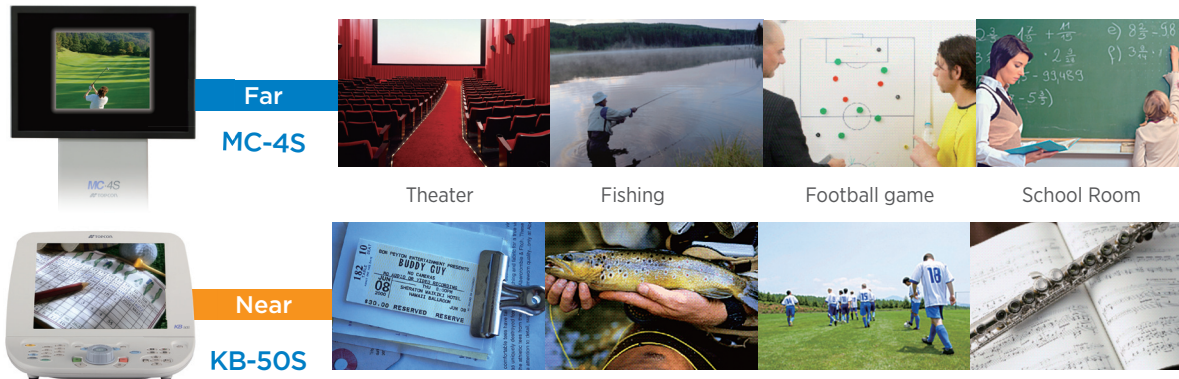
This feature assists optometrists in explaining the effect of polarized glasses to their patients.



3D Mirror Chart MC-4S

Virtual Vision Experience

This feature incorporates virtual image content, which enables the operator to test visual performance in real life situations. Objects that appear to be far away can be easily brought closer by using the KB-50S. This option is very useful for checking vision in perspective and for choosing the appropriate progressive lenses.



Specifications

Test distance	Equivalent to 5.0m
Test chart	Visual acuity test chart for visual acuity 0.03 - 2.0 * and visual function test chart
Chart display	Charts of one horizontal line, one vertical line, one character, R&G, reversed B&W are displayed. Contrast is changed. Polarization display is possible.
Filter	Polarized filter
Luminance	200 ± 20cd/m2
Contrast	85% or more
Installing distance	60cm, 80cm or 100cm (from the vertex of the patient to the chart window of the instrument)
Dimensions	440mm (W) × 339mm (D) × 1330mm (H)
Weight	20.3kg
Power supply voltage	AC 100-240V, AC adapter
Frequency	50-60Hz, AC adapter
Power supply input	1.5A, AC adapter

* Subject to change in design and/or specifications without advanced notice.



IMPORTANT In order to obtain the best results with this instrument, please be sure to review all user instructions prior to operation.



TOPCON CORPORATION



TOPCON CORPORATION



TOPCON CORPORATION