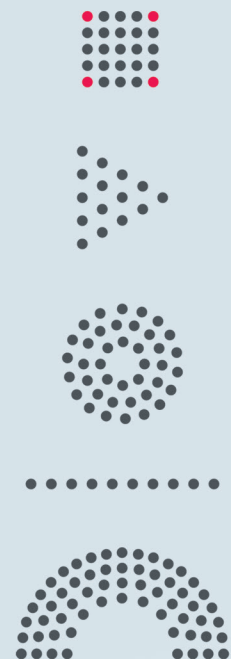
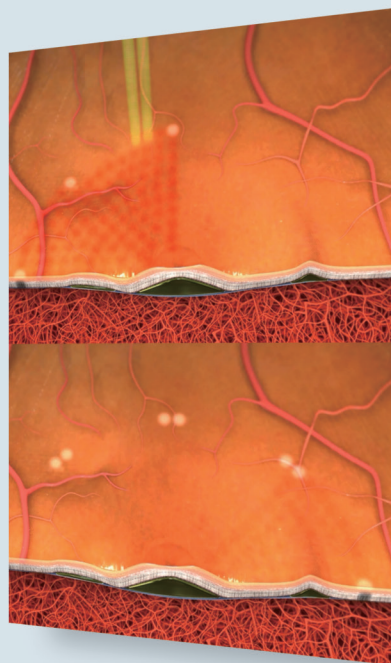




Endpoint Management™ for PASCAL Photocoagulation Laser Systems



TOPCON
YOUR VISION. OUR FOCUS.

Endpoint Management™

Non-Damaging Retinal Laser Therapy

Endpoint Management™ allows physicians to treat with confidence and control while offering non-damaging,* tissue stimulating laser treatments.

The Benefits for Physicians and Patients are Substantial

More Flexibility:

Tissue-sparing sub-threshold treatment options and multi-spot titration capabilities provide more treatment possibilities than ever before.

More Feedback:

Unique Landmark Pattern feature provides visible reference points, a clear advantage over other sub-visible laser application technologies.

More Control:

Offers superior control by providing the ability to deliver laser endpoints through precise settings and repeatable energy delivery. Endpoint Management algorithms give absolute control over laser dosage.

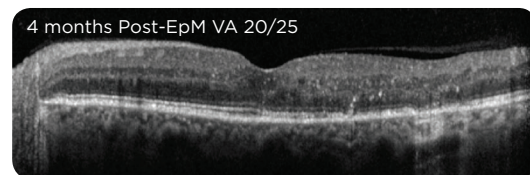
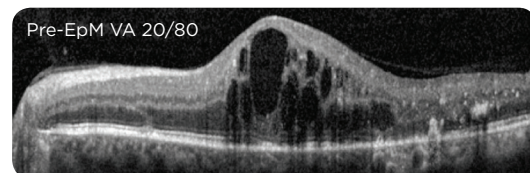
Less Uncertainty:

Endpoint Management offers a level of accuracy no other sub-visible laser application can match. This unique system offers simplicity of control to achieve and track the desired endpoint throughout the procedure.

Improved Patient Comfort:

Shorter pulses contribute to a reduction in the pain a patient may feel during treatment. Endpoint Management further improves this by controlling and reducing both time and power being delivered.

Patient Case: Diabetic Macular Edema



Photos courtesy of Dr. Daniel Lavinsky

“...more confidence to treat close to the fovea.”

“...very nice long-term results...”

“...very quick treatment...”

—Dr. Daniel Lavinsky

Endpoint Management Advantages

Advanced Titration Capability

Repeatable results, even at sub-visible levels, are easily attainable with PASCAL's unique titration feature. This enables the user to simply set a percentage of energy below the barely visible titration level to provide effective, less-damaging treatments.

Visible Landmark Patterns:

Landmark spots can give the physician full control and visibility of laser delivery by simply setting the desired endpoint and tracking it during the treatment.

Landmark patterns with Endpoint Management software provide accurate feedback with visible markers. Physicians now have full control between therapeutic boundaries and energy application.



Endpoint Management Off



Endpoint Management with Landmarks On

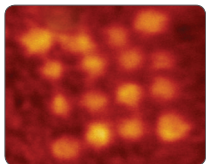


Endpoint Management with Landmarks Off

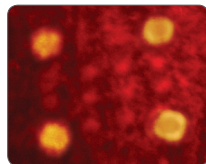
Patterns shown currently available only on Synthesis lasers.

Red dots on pattern represent Landmark reference points (set by visible titration) while yellow dots represent Endpoint Management, delivering laser energy at a reduced percentage of the set Landmark power.

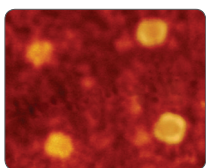
Landmark Patterns



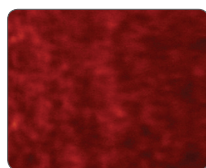
Endpoint Management (EpM) Off



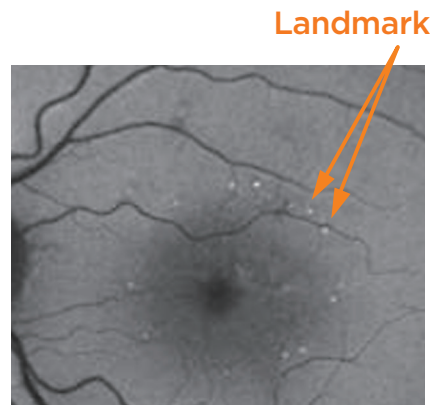
EpM with Landmarks: High %



EpM with Landmarks: Low %



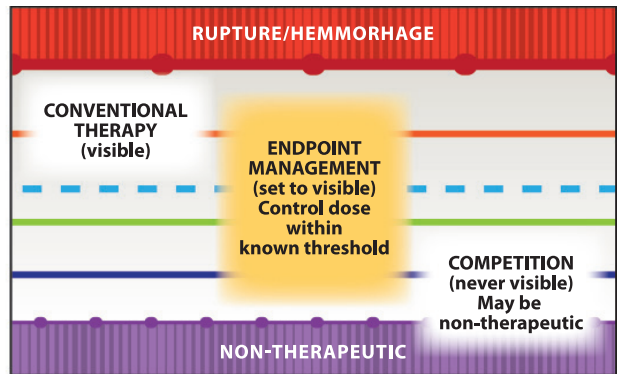
Endpoint Management Only



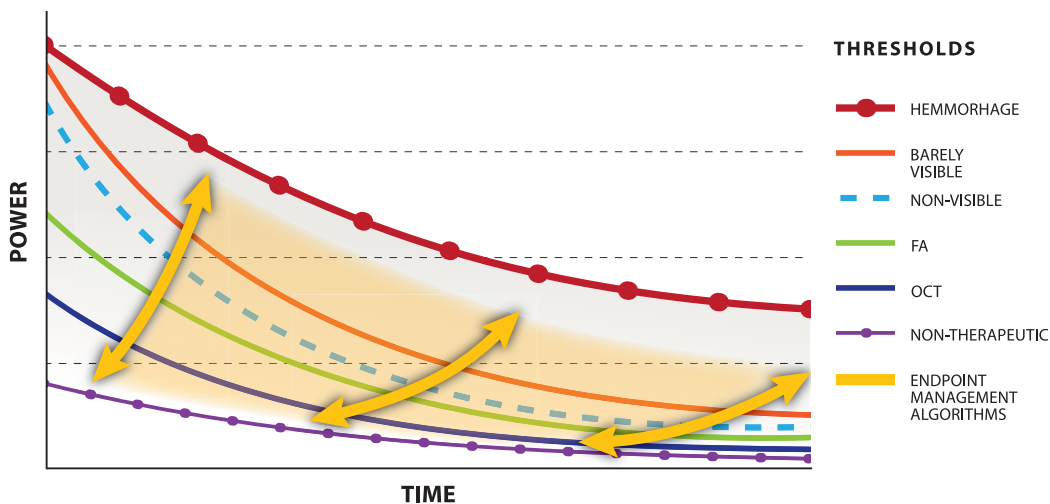
When applying Landmark Patterns, reference points (landmarks) offer feedback on proper dosage, treatment location and positioning of the laser.

Endpoint Management™ is Mathematically Precise

The Endpoint Management algorithms intelligently couple the Arrhenius equation (temperature dependence on reaction rates) with extensive data on laser-tissue interactions. Using this formula, changes induced in the tissue by heating are accounted for during a laser treatment. Since the treatment is actually dependent on both temperature and the time over which laser is applied, Endpoint Management modulates power and duration simultaneously. Physicians can adjust the level of laser intensity providing a linear control over an inherently nonlinear process.



Conventional laser therapy has always provided a visible endpoint. Endpoint Management™ utilizes this approach to establish a baseline using conventional means, then delivers sub-visible laser applications that stay within therapeutic boundaries. With other non-visible treatment technologies that do not establish a baseline, treatments may be non-therapeutic.



Endpoint Management™ algorithms adjust power and duration simultaneously, maximizing the ability to safely and accurately control the desired endpoints.

Endpoint Management™ is an optional accessory for PASCAL, Streamline and Synthesis laser systems. Contact your local Topcon representative for information about system upgrade requirements.

* Not available in all countries, please check with your distributor for availability in your country
* Subject to change in design and/or specifications without advanced notice.

IMPORTANT In order to obtain the best results with this instrument, please be sure to review all user instructions prior to operation.



TOPCON CORPORATION



TOPCON CORPORATION



TOPCON CORPORATION



TOPCON CORPORATION

75-1 Hasunuma-cho, Itabashi-ku, Tokyo 174-8580, Japan. Phone:+81-(0)3-3558-2522/2502 Fax:+81-(0)3-3965-6898 www.topcon.co.jp

TOPCON MEDICAL SYSTEMS, INC.

111 Bauer Drive, Oakland, NJ 07436, U.S.A.
Phone:+1-201-599-5100 Fax:+1-201-599-5250 www.topconmedical.com

TOPCON CANADA INC.

110 Provencher Avenue, Boisbriand, QC J7G 1N1 CANADA
Phone:+1-450-430-7771 Fax:+1-450-430-6457 www.topcon.ca

TOPCON EUROPE MEDICAL B.V.

Essebaan 11, 2908 LJ Capelle a/d IJssel, P.O.Box145;
2900 AC Capelle a/d IJssel, THE NETHERLANDS
Phone:+31-(0)10-4585077 Fax:+31-(0)10-4585045
E-mail: medical@topcon.eu; www.topcon-medical.eu

ITALY OFFICE

Viale dell'Industria 60, 20037 Paderno Dugnano, (Milano), ITALY
Phone:+39-02-9186671 Fax:+39-02-91081091 E-mail: info@topcon.it; www.topcon.it

DANMARK OFFICE

Præstemarkvej 25, 4000 Roskilde, DANMARK
Phone:+45-46-327500 Fax:+45-46-327555
E-mail: topcon@topcondanmark.dk www.topcondanmark.dk

IRELAND OFFICE

Unit 276, Blanchardstown, Corporate Park 2 Ballycoolin Dublin 15, IRELAND
Phone:+353-18975900 Fax:+353-18293915 E-mail: medical@topcon.eu; www.topcon.ie

TOPCON S.A.R.L.

BAT A1 3 route de la révolte 93206 SAINT DENIS CEDEX
Phone:+33-1-49-21-23-23 Fax: +33-1-49-21-23-24 E-mail:topcon@topcon.fr; www.topcon.fr

TOPCON DEUTSCHLAND MEDICAL G.m.b.H.

Hanns-Martin-Schleyer Strasse 41, D-47877 Willich, GERMANY
Phone:+49-(0)2154-8850 Fax:+49-(0)2154-885177 E-mail:med@topcon.de; www.topcon.de

TOPCON SCANDINAVIA A.B.

Neogatan 2, P.O.Box 25, 43151 Mölndal, SWEDEN
Phone:+46-(0)31-7109200 Fax:+46-(0)31-7109249 E-mail:medical@topcon.se; www.topcon.se

TOPCON ESPAÑA S.A.

HEAD OFFICE
Frederic Mompou 4 Esc. A Bajos 3, 08960 Sant Just Desvern Barcelona, SPAIN
Phone:+34-93-4734057 Fax:+34-93-4733932 E-mail: medica@topcon.es; www.topcon.es

TOPCON (GREAT BRITAIN) LTD.

Topcon House, Kennet Side, Bone Lane, Newbury, Berkshire RG14 5PX United Kingdom
Phone:+44-(0)1635-551120 Fax:+44-(0)1635-551170 E-mail:medical@topcon.co.uk; www.topcon.co.uk

TOPCON POLSKA Sp. z o. o.

ul. Warszawska 23; 42-470 Siewierz, POLAND
Phone:+48-(0)32-6705045 Fax:+48-(0)32-6713405 www.topcon-polska.pl

TOPCON SINGAPORE MEDICAL PTE. LTD.

1 JALAN KILANG TIMOR #09-01 PACIFIC TECH CENTRE SINGAPORE 159303
Phone:+65-68720606 Fax:+65-67736150
E-mail:medical_sales@topcon.com.sg www.topcon.com.sg

REPRESENTATIVE OFFICE IN INDONESIA

Level 3B, Tower A, Kota Kasablanka unit GH-04, Jl. Casablanca, Kav 88, Jakarta, Indonesia 12870
Phone:+62-21-2963-8004

TOPCON INSTRUMENTS (MALAYSIA) SDN.BHD.

No. D1, (Ground Floor), Jalan Excella 2, Off Jalan Ampang Putra, Taman Ampang Hilir, 55100 Kuala Lumpur, MALAYSIA
Phone:+60-(0)3-42709866 Fax:+60-(0)3-42709766

TOPCON INSTRUMENTS (THAILAND) CO.,LTD.

77/162 Sinnsathorn Tower, 37th Floor, Krungthoburi Rd., Klongtonnai, Klongsam, Bangkok 10600, THAILAND
Phone:+66(0)2-440-1152-7 Fax:+66-(0)2-440-1158

TOPCON CORPORATION BEIJING OFFICE

Block No.9, Kangding Street Beijing Economic-Technological Development Area, Beijing 100176, CHINA
Phone:+86-(0)10-6780-2799 Fax:+86-(0)10-6780-2790